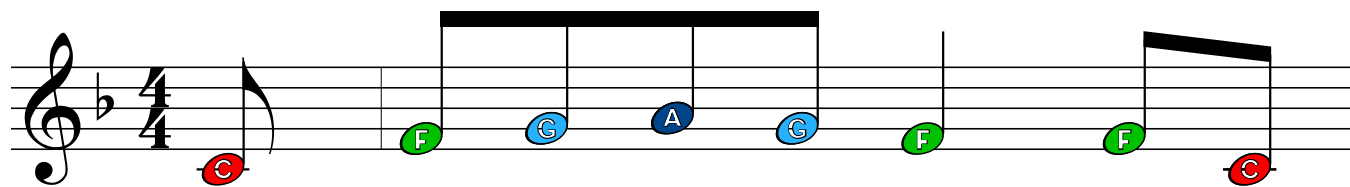
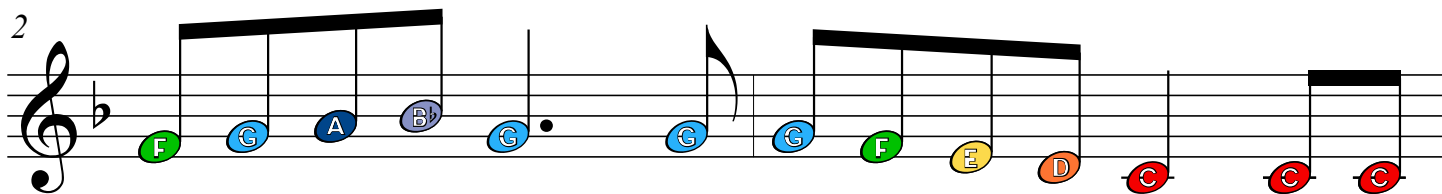


Σαν φεύγει ο Χειμώνας

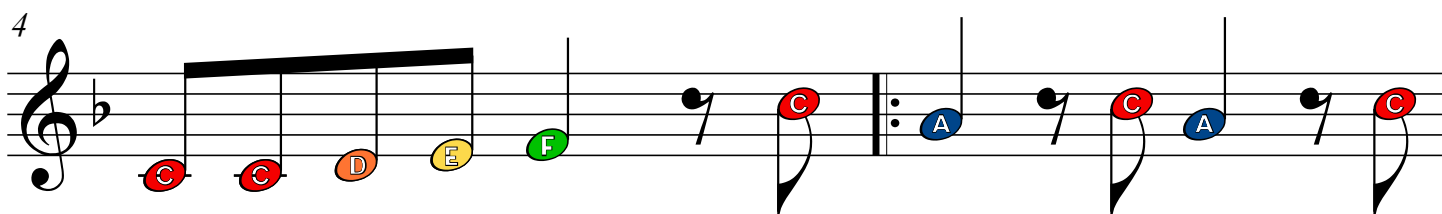
mesaaptotragoudi.gr



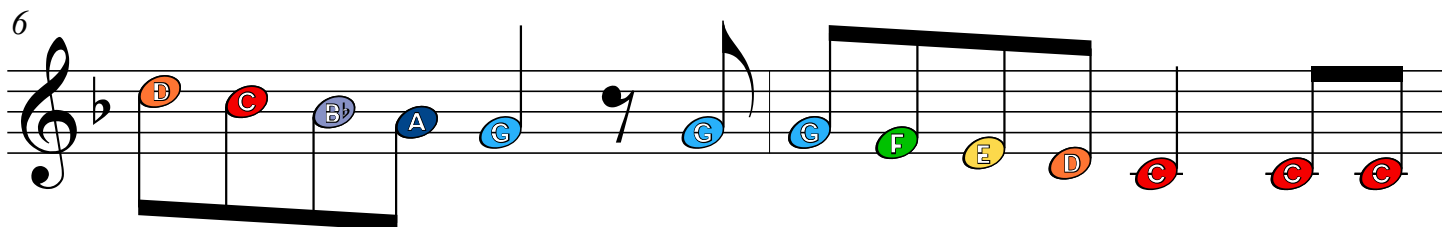
Σαν φεύ - γει ο Χει - μώ - νας ο Α -



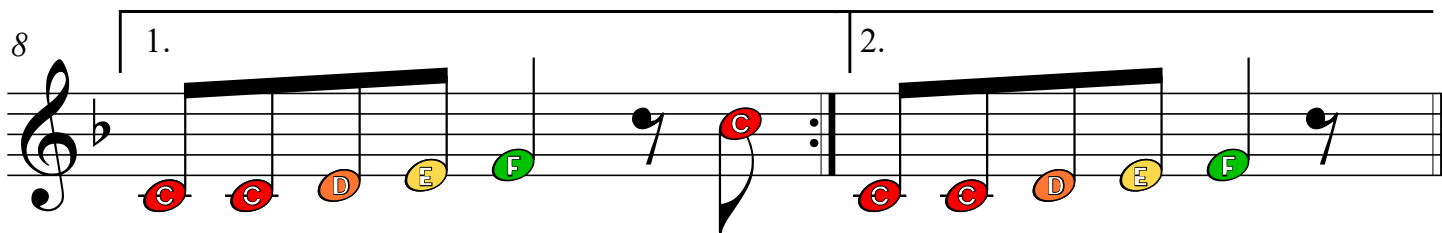
πρί-λης χαι-ρε - τά ο Μά-ης ήρ - θε τώ - ρα κι ο



κού-κος τρα-γου - δά Κου - κου, κου - κου ο Α -



πρί-λης χαι-ρε - τά ο Μά-ης ήρ - θε τώ - ρα κι ο



κού-κος τρα-γου - δά Κου - κού-κος τρα-γου-δά!

The image displays a musical score for the song "Σαν φεύγει ο Χειμώνας". It features two staves. The upper staff contains a sequence of notes with accidentals, grouped into pairs: (G#, A#), (A#, B#), (B#, C#), (C#, D#), (D#, E#), (E#, F#), (F#, G#), (G#, A#), (A#, B#), (B#, C#), (C#, D#), (D#, E#), (E#, F#), (F#, G#). Lines connect these notes to a piano keyboard diagram below. The keyboard keys are color-coded: C (red), D (orange), E (yellow), F (green), G (blue), A (dark blue), B (grey), C (red), D (orange), E (grey), F (grey), G (grey). The lower staff shows a simple melodic line with notes corresponding to the sequence: G, A, B, C, D, E, F, G, A, B, C, D, E, F, G.

